

CEMENT PLASTER WALL COVERING ASSEMBLY (BY OTHERS)

WEATHER RESISTIVE BARRIER (BY OTHERS)

NOTES:

- 1. MORTAR THICKNESS AT WALL SKEWED BY DISPLAY OF WATERPROOFING PLY SHEETS STAGGER.
- 2. PLYWOOD DECKING TO BE MIN CCX PLUGGED AND TOUCH SANDED, SLOPED TO DRAIN & JOINTS. BLOCKED. STRUCTURAL ENGINEER TO VERIFY PLYWOOD DECK IS OF SUFFICIENT THICKNESS AND DESIGNED TO SUPPORT WEIGHT OF OVERLYING MATERIALS. FRAMING (BY OTHERS) NOT SHOWN.

- 3. LAURENCO PMMA RESIN MUST EXTEND A MINIMUM 1/4" BEYOND LAURENCO FLEECE.

PLYWOOD WALL SHEATHING (BY OTHERS)

9 IN. SELF ADHESIVE MEMBRANE (BY OTHERS)

LAURENCO PMMA LIQUID MEMBRANE FLASHING OR APPROVED ALTERNATE FOR UV PROTECTION

STUCCO WEEP SCREED (BY OTHERS)

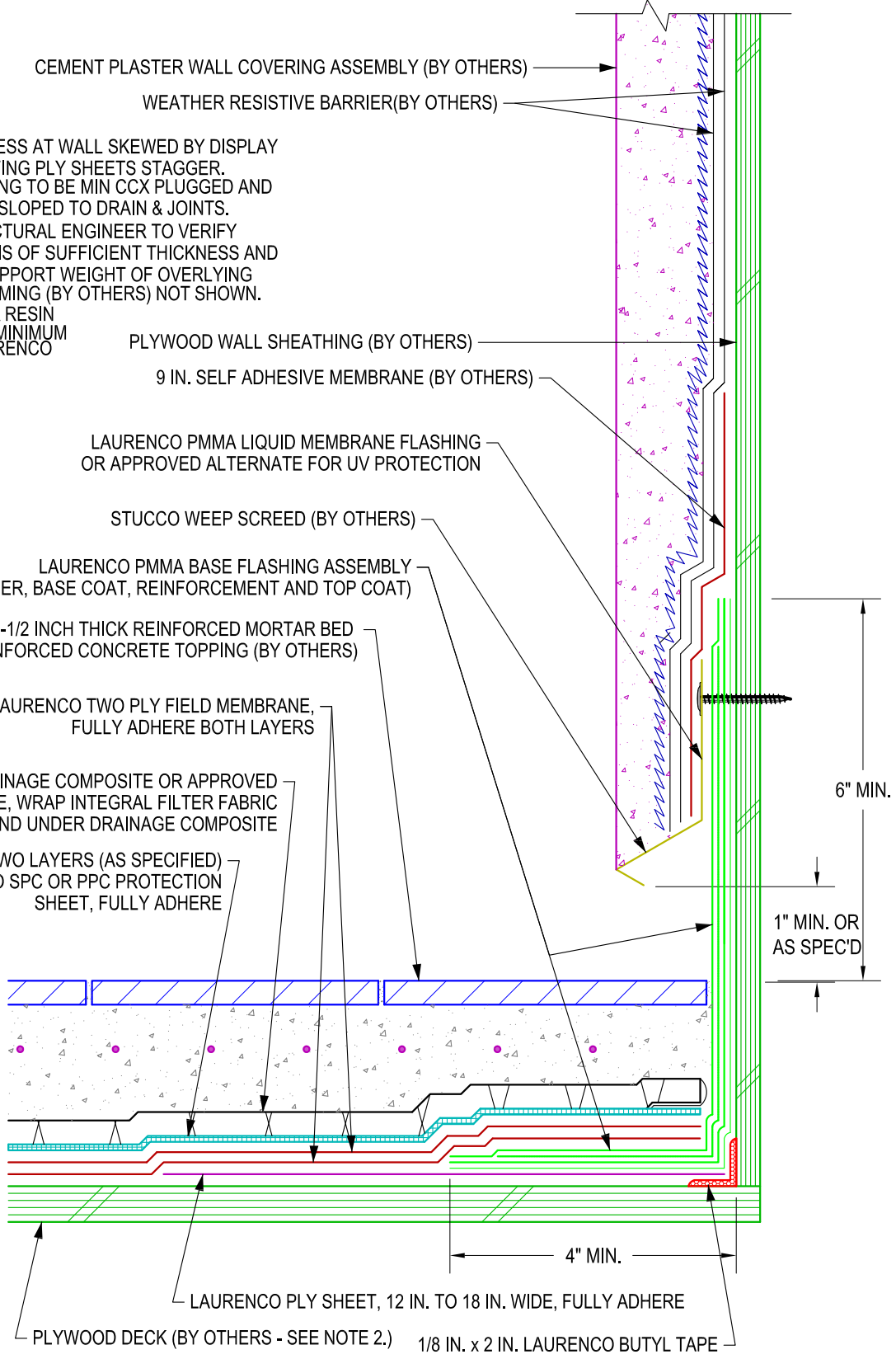
LAURENCO PMMA BASE FLASHING ASSEMBLY (PRIMER, BASE COAT, REINFORCEMENT AND TOP COAT)

TILE OVER MIN. 1-1/2 INCH THICK REINFORCED MORTAR BED OR REINFORCED CONCRETE TOPPING (BY OTHERS)

LAURENCO TWO PLY FIELD MEMBRANE, FULLY ADHERE BOTH LAYERS

LAURENCO DRAINAGE COMPOSITE OR APPROVED ALTERNATE, WRAP INTEGRAL FILTER FABRIC OVER END AND UNDER DRAINAGE COMPOSITE

ONE OR TWO LAYERS (AS SPECIFIED) LAURENCO SPC OR PPC PROTECTION SHEET, FULLY ADHERE



6" MIN.

1" MIN. OR AS SPEC'D

4" MIN.

LAURENCO PLY SHEET, 12 IN. TO 18 IN. WIDE, FULLY ADHERE

PLYWOOD DECK (BY OTHERS - SEE NOTE 2.) 1/8 IN. x 2 IN. LAURENCO BUTYL TAPE

**BASE FLASHING AT CEMENT PLASTER WALL COVERING
 (THICK SET MORTAR OR CONCRETE TOPPING)**