

APPLICATION OF TARGET PATCHES

STEP 13: TAKE THE FOUR REMAINING 9" X 9" W/P SHEET CUTS AND FOLD INTO QUARTERS (BLUE FOLD LINES) CUT ALONG THE GREEN CUTLINE IN FIG. 14.2. THIS IS FROM THE CENTER OF THE SQUARE, DIAGONALLY TO A CORNER. PLACE THE MITER CUT TARGET PATCH ONTO THE CORNER AS SHOWN IN FIG. 14.1. TOP COAT LIGHTLY WITH ADHESIVE.

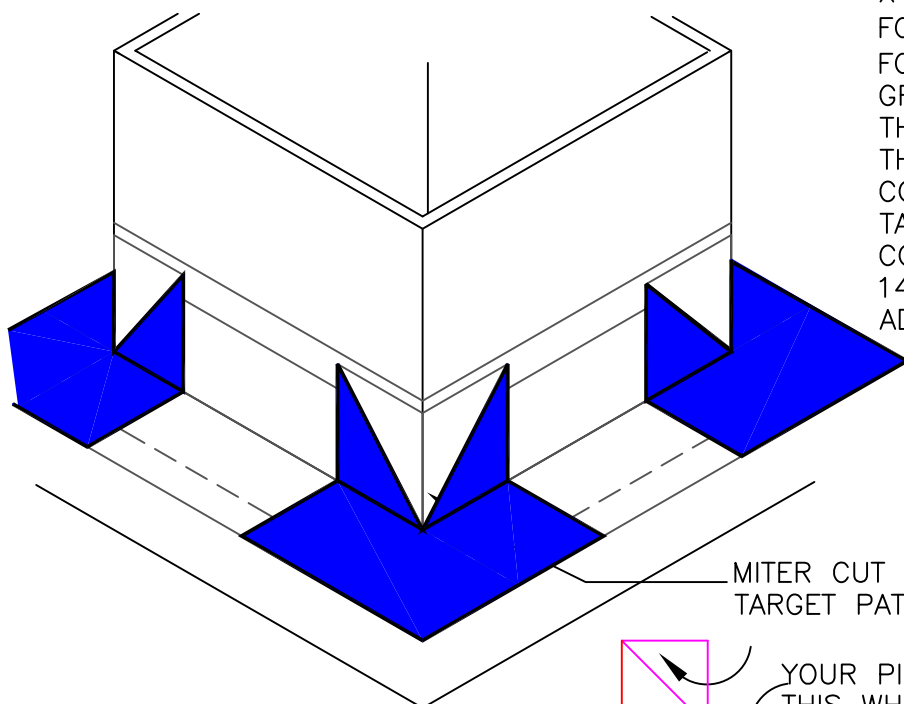


FIG. 13.1

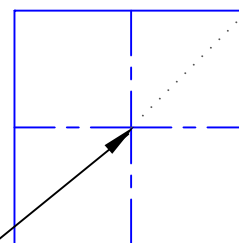
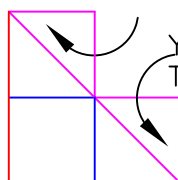


FIG. 14.2



YOUR PIECE SHOULD LOOK LIKE THIS WHEN COMPLETE.

NOTE: LAURENCO PMMA LIQUID FLASHING MAY BE UTILIZED IN LIEU OF MEMBRANE FLASHING.

STEP 14: CUT 8 9" X 9" PIECES OF W/P SHEET TWO FOR EACH CORNER. TAKE FOUR OF THE PIECES AND FOLD IN EVEN QUARTERS (BLUE FOLD LINES) CUT ALONG THE GREEN CUT LINE IN FIG. 13.2. THIS WILL MAKE A BOX CUT TARGET PATCH. PLACE IT ONTO EACH CORNER. PRESS IN FIRMLY AND TOP COAT LIGHTLY WITH ADHESIVE.

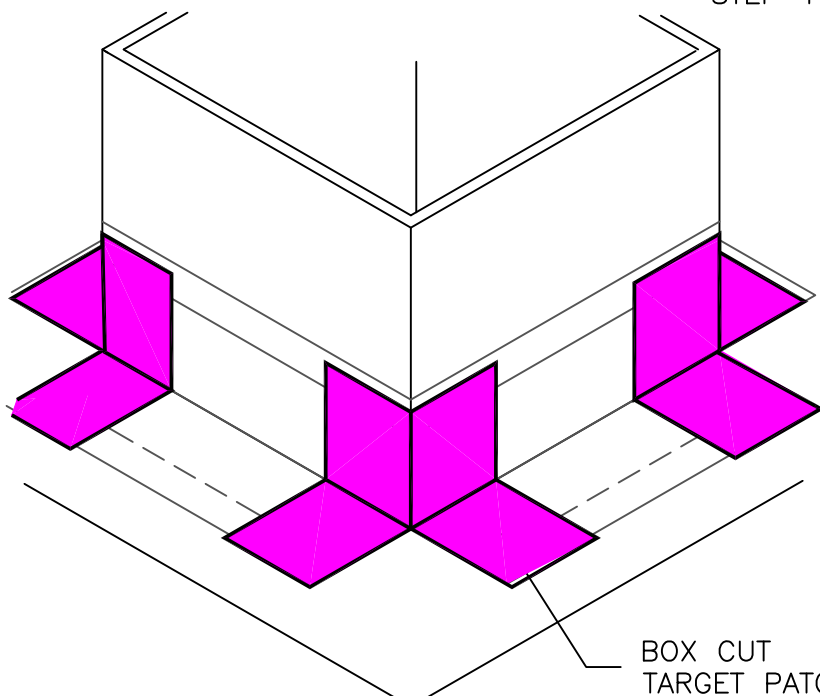


FIG. 14.1

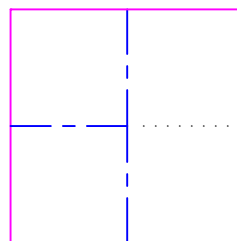


FIG. 13.2