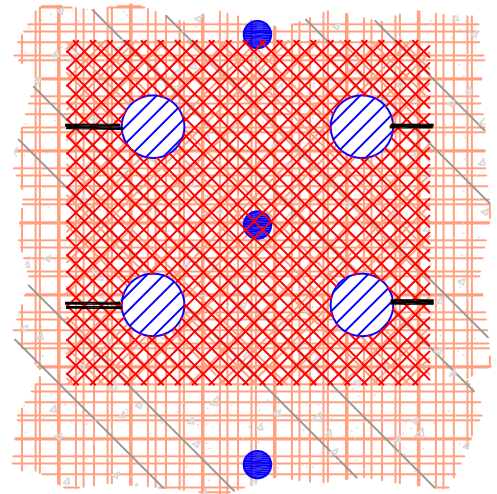
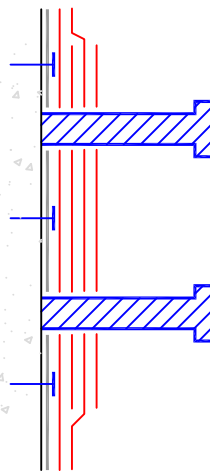


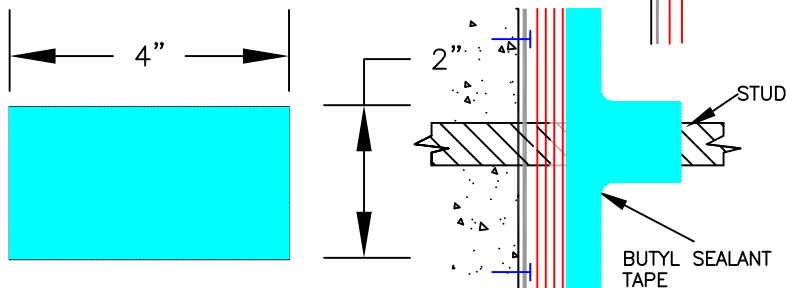
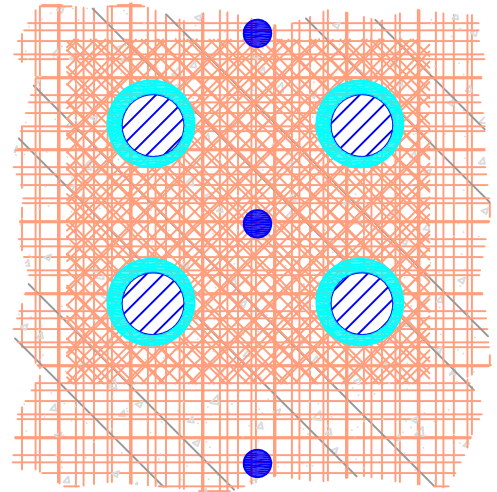
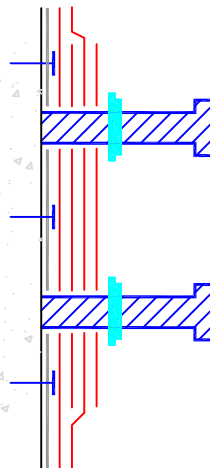
## STEP 4 OF 6

FOLLOW WRITTEN INSTRUCTIONS ON THE INSTALLATION THE SECOND PATCH PLY. BE SURE TO TIGHTLY FIT THE SECOND PATCH PLY AROUND THE NELSON STUDS. CUT FOUR HORIZONTAL SLOTS IN THE FIRST PATCH PLY AS SHOWN FROM THE CENTER OF THE NELSON STUDS TO THE SIDES OF THE PATCH. FIRMLY RUB PATCH INTO PLACE. DO NOT OVER CUT.



## STEP 5 OF 6

FOLLOW WRITTEN INSTRUCTIONS ON THE INSTALLATION OF THE 1/8" X 2" BUTYL SEALANT TAPE. BE SURE TO TIGHTLY FIT THE TAPE AROUND THE NELSON STUDS. 1/2 ON THE STUD AND 1/2 ON THE SECOND PATCH FLASHING.



NOTE: WHEN WORKING WITH TAPE USE A CAN OF WATER AS SOURCE TO WET FINGERS, SCISSORS, KNIVES, ETC.

## STEP 6 OF 6

FOLLOW THE WRITTEN INSTRUCTIONS ON INSTALLATION OF THE RUBBERIZED FLASHING COATING TROWEL GRADE. WHEN GOING AROUND INDIVIDUAL STUDS IN A NELSON STUD GROUP THINLY COAT THE BUTYL SEALANT TAPE AND EXTEND COATING NO MORE THAN 1/4" ONTO THE STUD AND SECOND PATCH.

