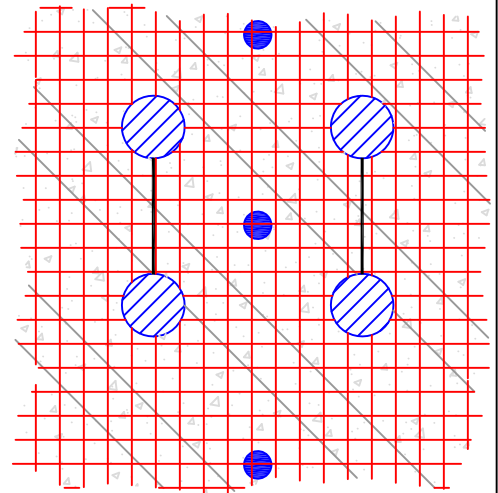
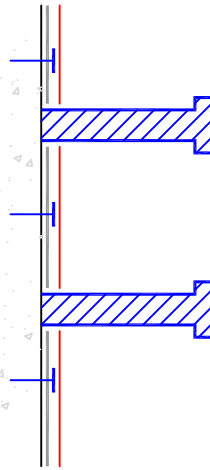


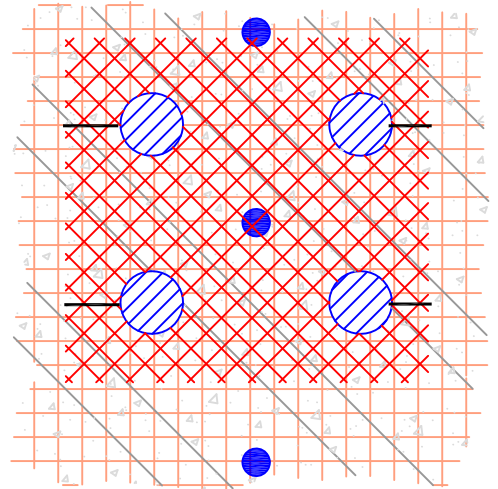
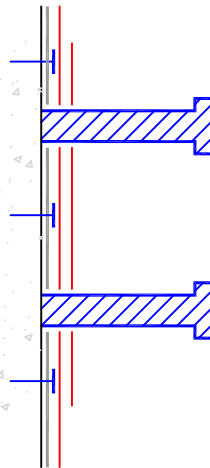
STEP 1 OF 6

FOLLOW WRITTEN INSTRUCTIONS ON THE INSTALLATION OF THE PROTECTION COURSE. BE SURE TO TIGHTLY FIT THE PROTECTION COURSE MEMBRANE AROUND THE NELSON STUDS. FOLLOW THE WRITTEN INSTRUCTIONS ON INSTALLATION OF THE FIRST PLY OF LAURENCO SHEET. WHEN GOING OVER A NELSON STUD GROUP CUT TWO VERTICAL SLOTS BETWEEN THE STUDS IN THE FIRST LAURENCO SHEET PLY TO ALLOW THE TWO PAIRS OF STUDS TO PASS THROUGH SNUGLY. DO NOT OVER CUT.



STEP 2 OF 6

FOLLOW WRITTEN INSTRUCTIONS ON THE INSTALLATION THE PATCH PLY. BE SURE TO TIGHTLY FIT THE FIRST PATCH PLY AROUND THE NELSON STUDS. CUT FOUR HORIZONTAL SLOTS IN THE FIRST PATCH PLY AS SHOWN FROM THE CENTER OF THE NELSON STUDS TO THE SIDES OF THE PATCH. FIRMLY RUB PATCH INTO PLACE. DO NOT OVER CUT.



WAIT 24 HOURS BEFORE PROCEEDING WITH STEP #3

STEP 3 OF 6

FOLLOW THE WRITTEN INSTRUCTIONS ON INSTALLATION OF THE SECOND PLY OF LAURENCO SHEET. WHEN GOING OVER A NELSON STUD GROUP CUT TWO HORIZONTAL SLOTS BETWEEN THE STUDS IN THE SECOND LAURENCO SHEET PLY TO ALLOW THE TWO PAIRS OF STUDS TO PASS THROUGH SNUGLY. DO NOT OVER CUT.

