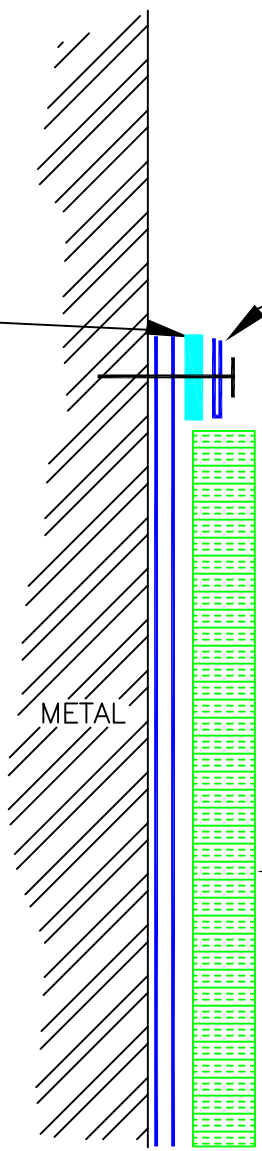


$\frac{1}{8}$ " X 2" BUTYL TAPE
FOLDED INTO A $\frac{1}{4}$ " X 1"
PIECE OR 2 LAYERS OF
 $\frac{1}{4}$ " X 1".

TERMINATION BAR
1/8"X1" 300 SERIES
STAINLESS STEEL, FLAT
BAR STOCK WITH PRE-
DRILLED HOLES ON 6"
8" CENTERS



EPS PROTECTION
BOARD SET IN FULL
BED OF LAURENCO
ADHESIVE

2 PLY LAURENCO
WATERPROOFING
SYSTEM