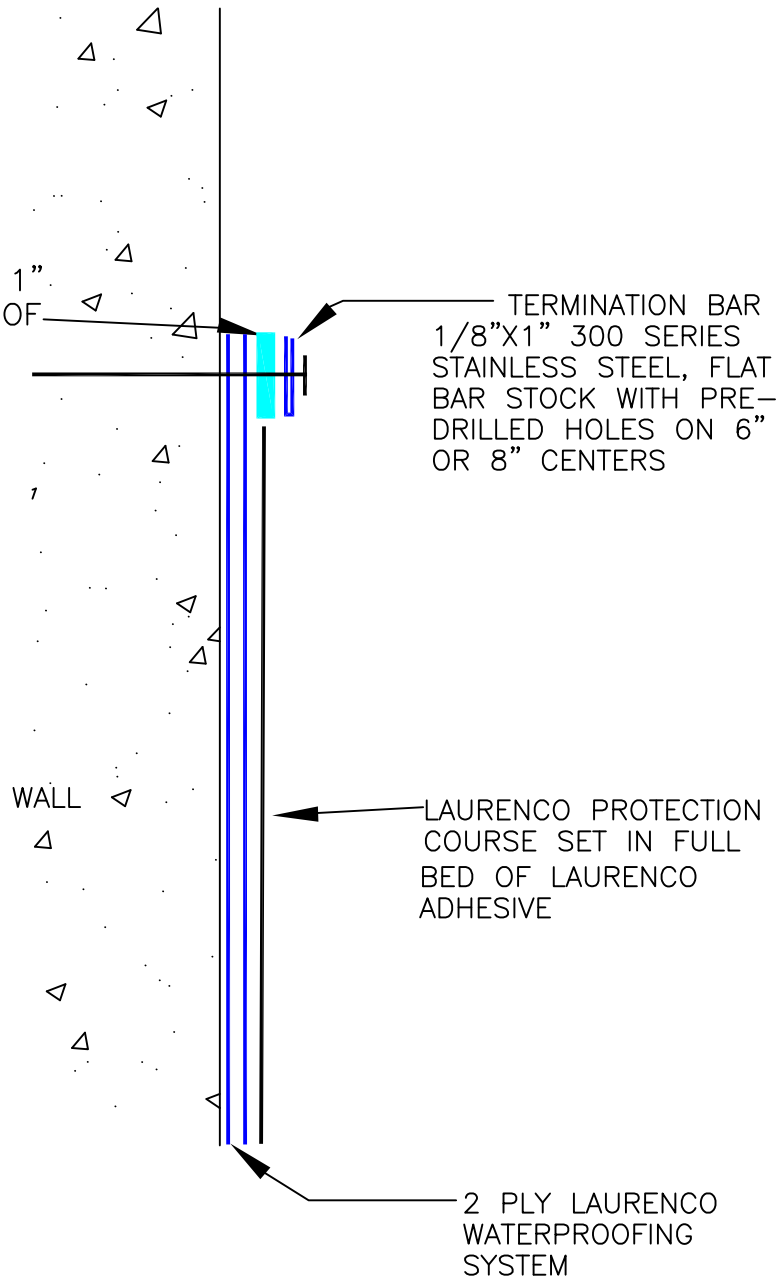


$\frac{1}{8}$ " X 2" BUTYL TAPE  
FOLDED INTO A  $\frac{1}{4}$ " X 1"  
PIECE OR 2 LAYERS OF  
 $\frac{1}{4}$ " X 1".



TERMINATION BAR  
 $\frac{1}{8}$ "X1" 300 SERIES  
STAINLESS STEEL, FLAT  
BAR STOCK WITH PRE-  
DRILLED HOLES ON 6"  
OR 8" CENTERS

LAURENCO PROTECTION  
COURSE SET IN FULL  
BED OF LAURENCO  
ADHESIVE

2 PLY LAURENCO  
WATERPROOFING  
SYSTEM